

► 我们的市场  
Our market



# PRODUCT DISPLAY

产品展示册



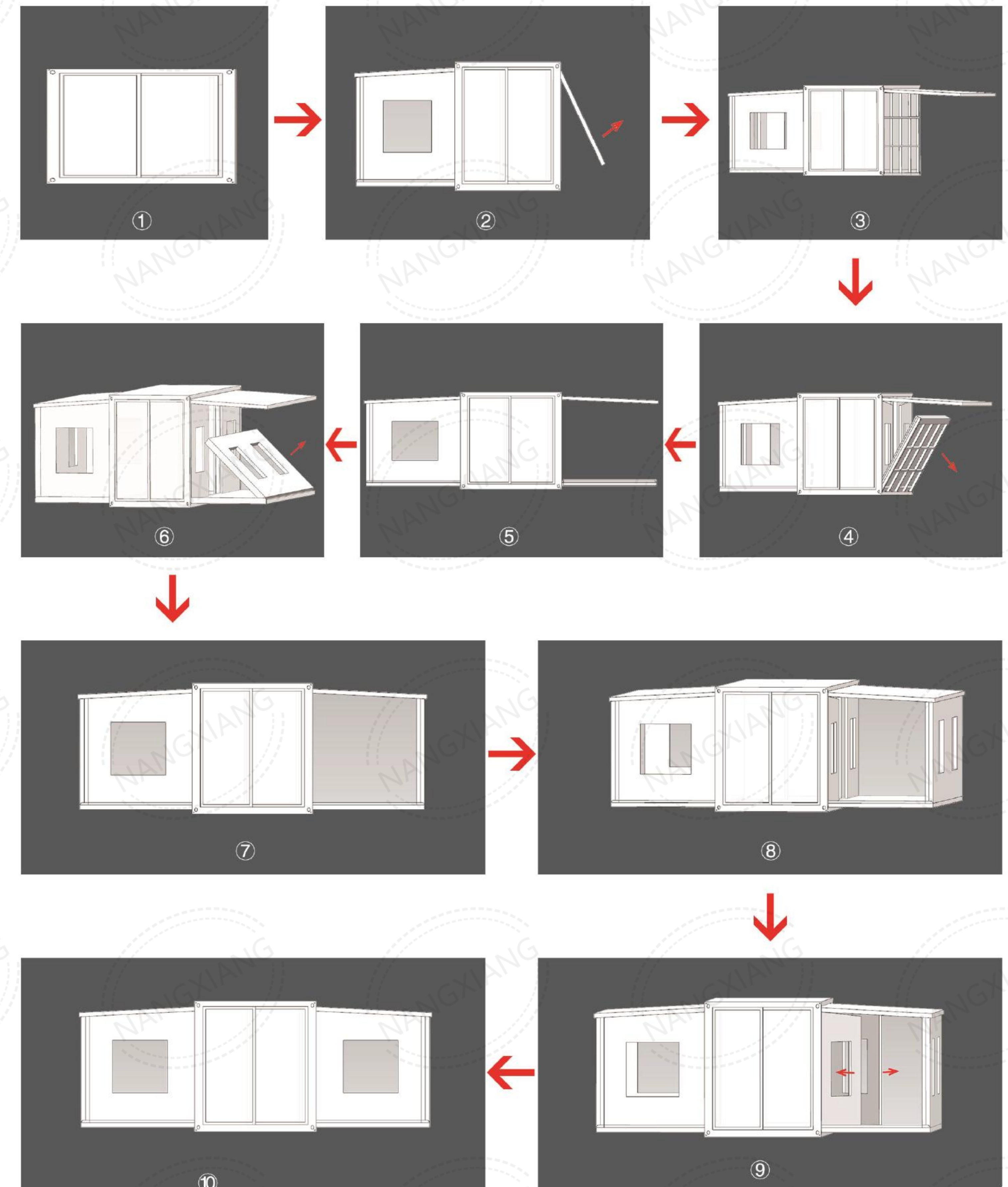
# Catalog

Certification.....	1
Specification.....	3
Installation Procedure.....	4
Appearance Display.....	5
Indoor Display.....	10
Assesories and Parts.....	14
Design Plan.....	17

The specifications of the 20ft expandable container house

<b>Basic Features</b>	External dimensions(mm)	W6300*L5900*H2480
	Internal dimensions(mm)	W6140*L5640*H2260
	Folding state(mm)	W2200*L5900*H2480
	Total weight ( kg )	2500
<b>Frame Structure</b>	Roof beam	80*100*T3.0mmQ235B
	Bottom side beam	80*100*T3.0mmQ235B
	End side beam	T2.0mm Q235B
	Mid column	150*210*T2.0mmQ235B
	Side wall frame	40*80*T1.5mmQ235B
	Side wall purline	40*60*T1.5mmQ235B
	Top/bottom purline	40*80*T1.5mmQ235B
	Secondary frame	40*80*T1.5mmQ235B
	Hanging head	T4mm Q235B
	Folding hinge	13mm Galvanized hinge
	Overall frame protective coating	Electrostatic spray/straight white plastic powder
	Top and bottom of middle cabinet	80*100*2.5mm square tube
	Side cabinet top and bottom	40*60*2.0 mm square tube
	<b>Top of Box</b>	External top plate
Internal ceiling		T0.35mm 193 type internal ceiling
<b>Wallboard</b>	Middle roof insulation	T65mm high strength EPS, steel plate or T65mm glass wool
	Side wall, front and rear wall panels	T65mm high strength EPS, steel plate or T65mm glass wool
	Internal partition	T65mm high strength EPS, steel plate or T65mm glass wool
	Internal toilet	1700*1500(can adjusted size )
<b>Floor</b>	Central part	Fireproof glass magnesium floor (18mm)
	Side part	engineered bamboo flooring (18mm)
<b>Electrical System</b>	Electrical wiring, installation in strict accordance with moisture-proof specifications, all electrical products must meet CE certification. Connection circuit according to circuit engineering specifications, indoor: 2 LED lights, 2 ceiling lights, 3 piece of 5-hole single socket, 1 piece of single socket, 3 piece of 10-hole socket, air conditioning socket 1, 20A leakage protector Voltage: 220V,50HZ. ( can do American standard, European standard, Italian standard, Australian standard and other national standard sockets and voltages.	
<b>Security Doors</b>	1SET (can adjustable door size and quantity and position )	
<b>Windows</b>	4 pieces ( 920*920mm )	
<b>Service Life</b>	1 years	
<b>Fire rating</b>	Rate A	
<b>Seismic grade</b>	Grade 8	
<b>Wind resistance level</b>	Level 10	

# Installation procedure



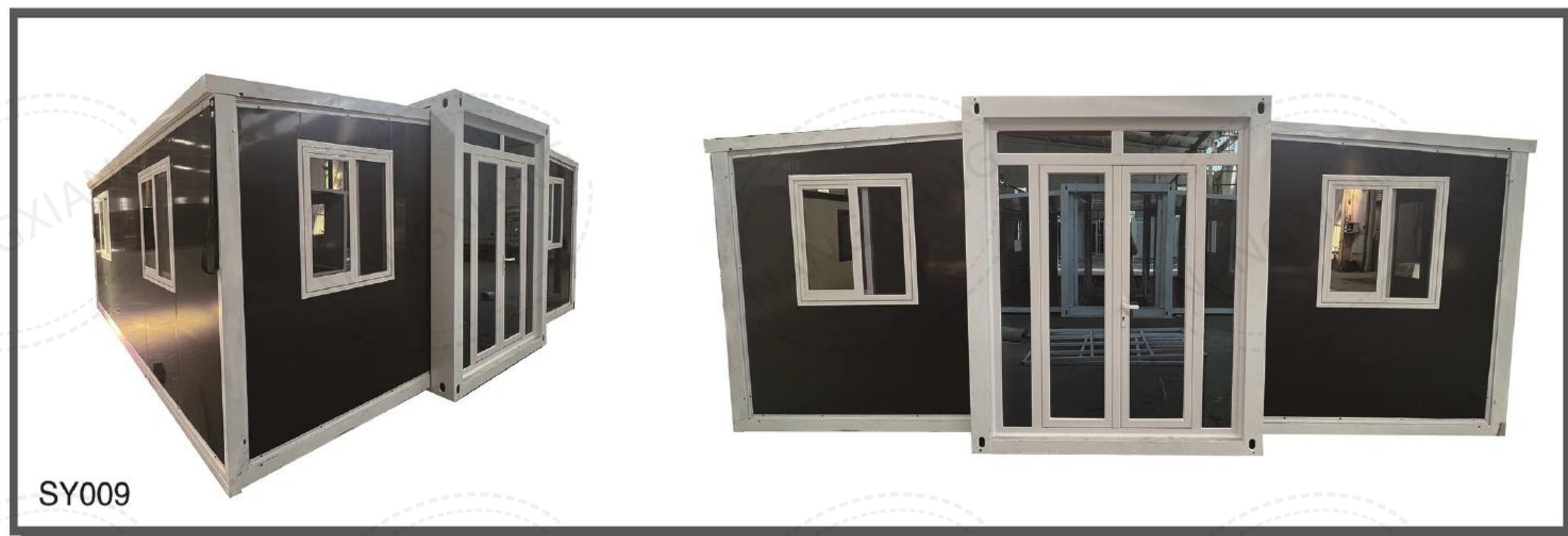
# Appearance Gallery



# Appearance Gallery



# Appearance Gallery



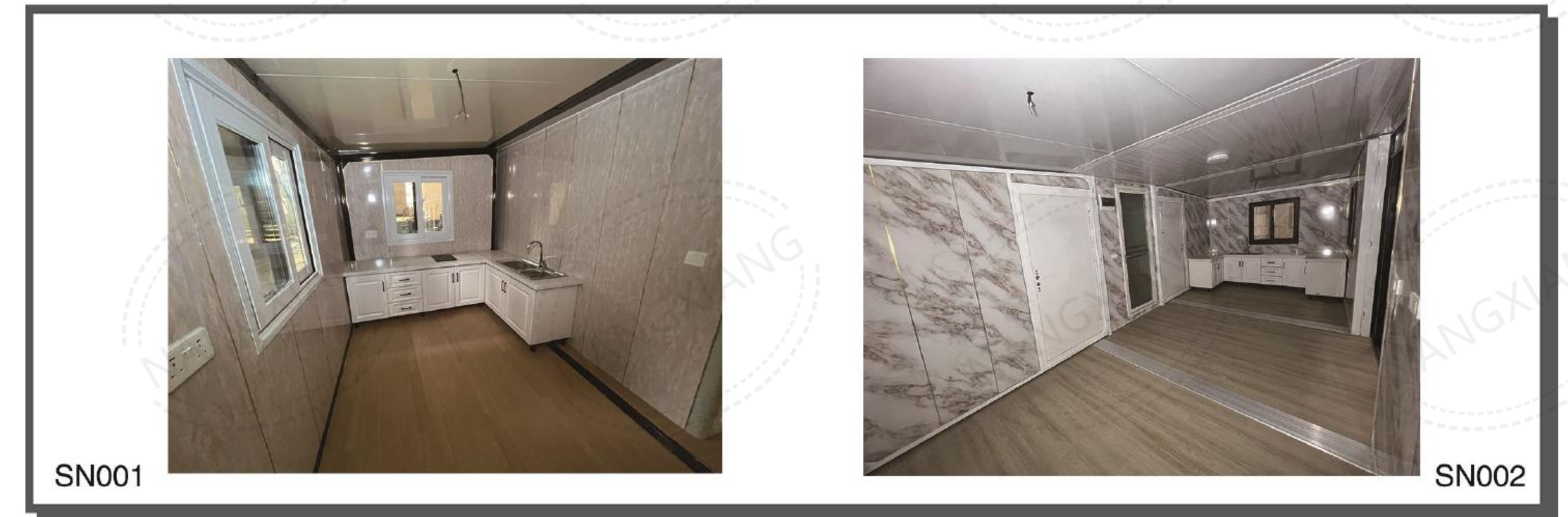
# Appearance Gallery



# Appearance Gallery



# Indoor display



# Indoor display



SN007



SN008



SN009



SN010



SN011



SN012

# Indoor display



SN013



SN014



SN015



SN016

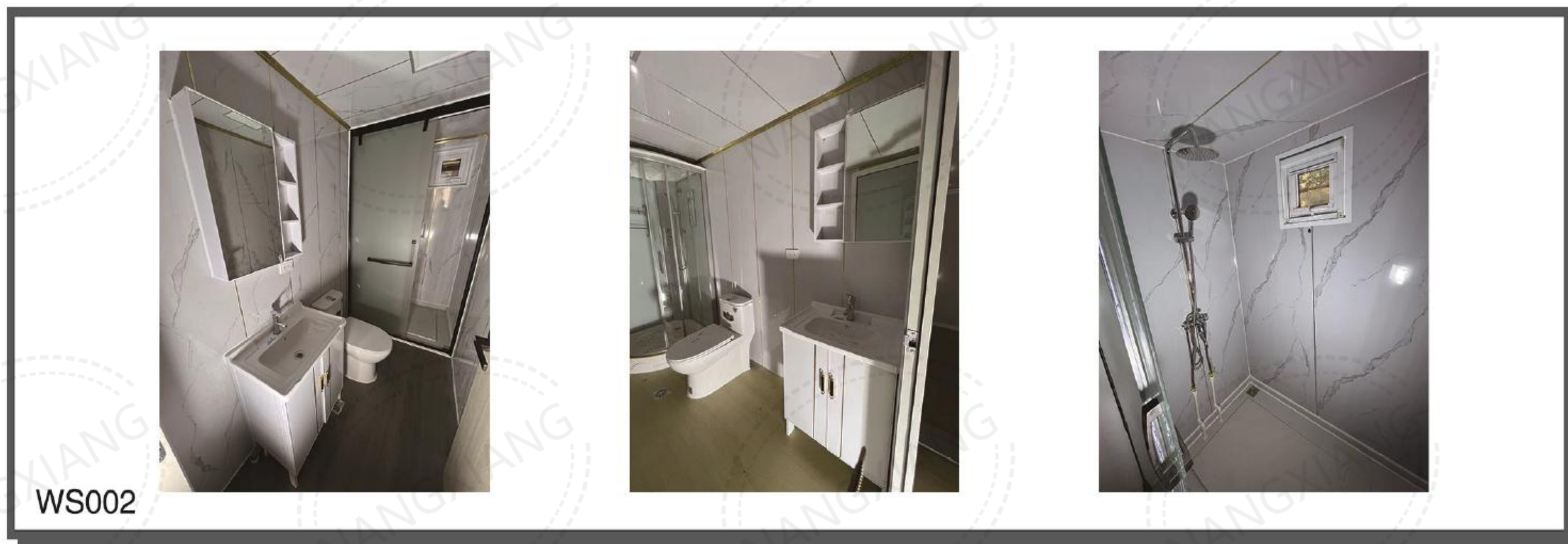


SN017



SN018

# Bathroom display



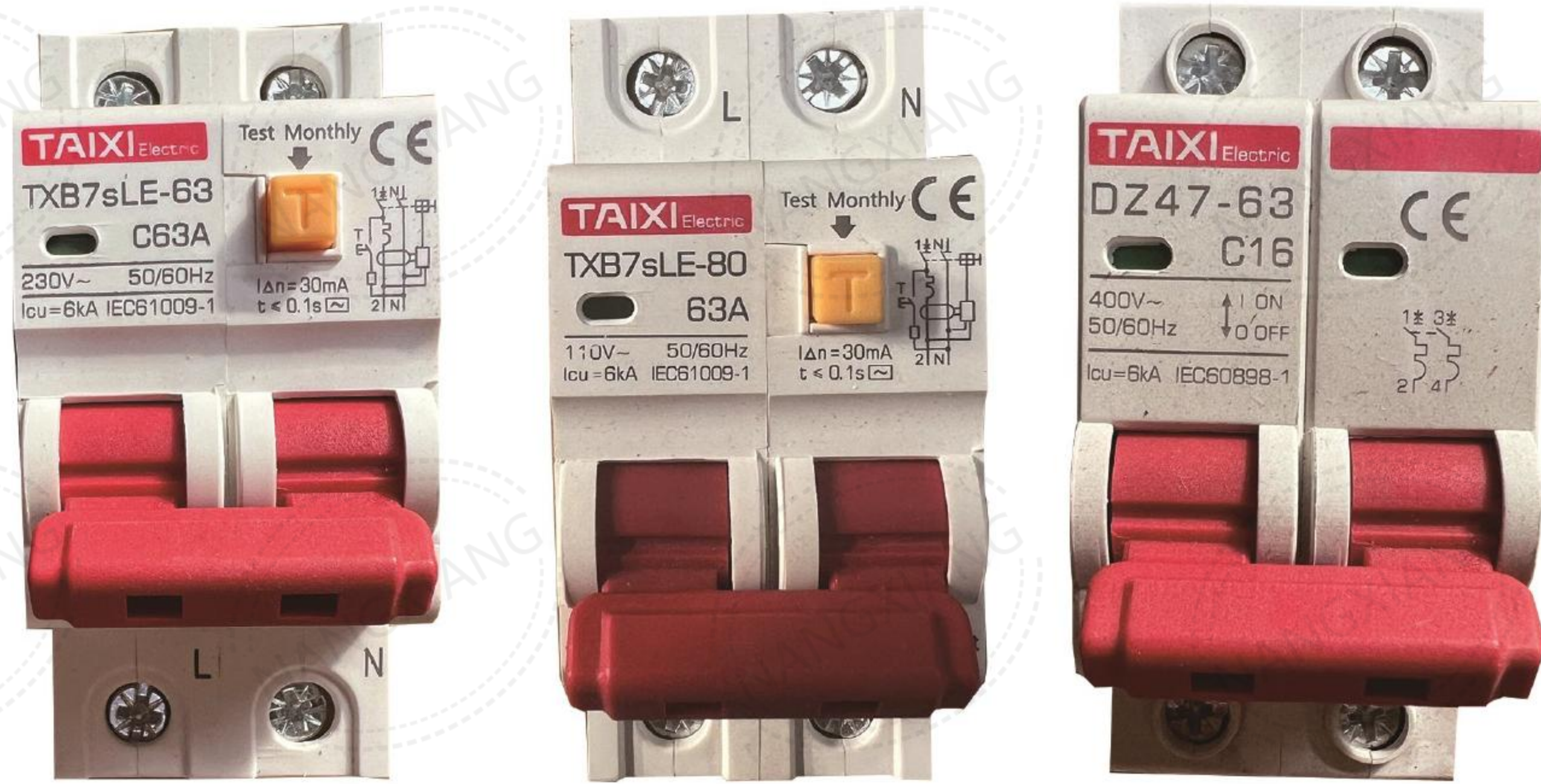
# Socket styles





# Breaker styles

# Switch styles



DL001

DL002

DL003



DL004

DL005

DL006

DL007



KG001



KG002



KG003



KG004

# Floor plans



# Floor plans



# Floor plans

# Floor plans



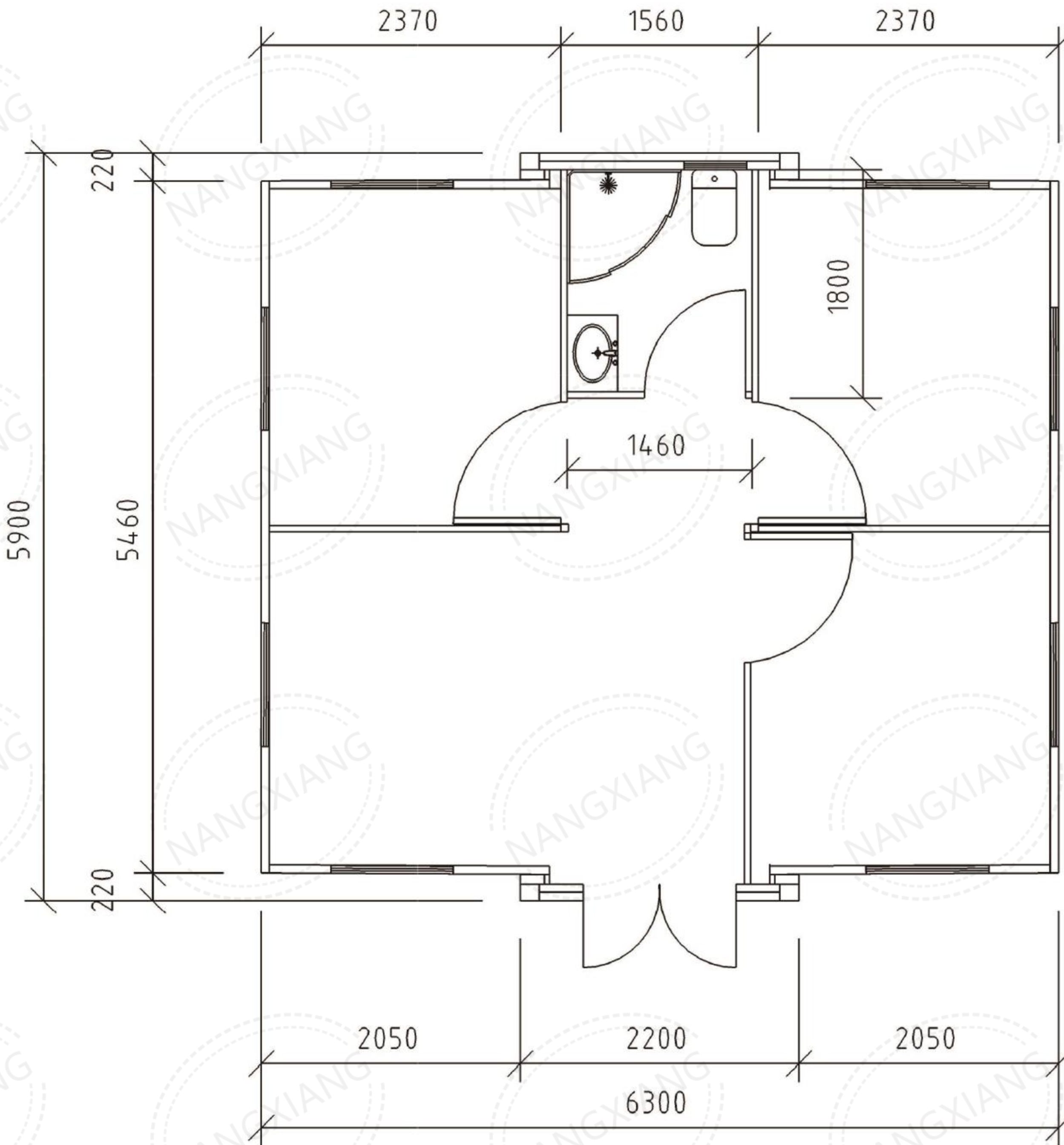
# Floor plans



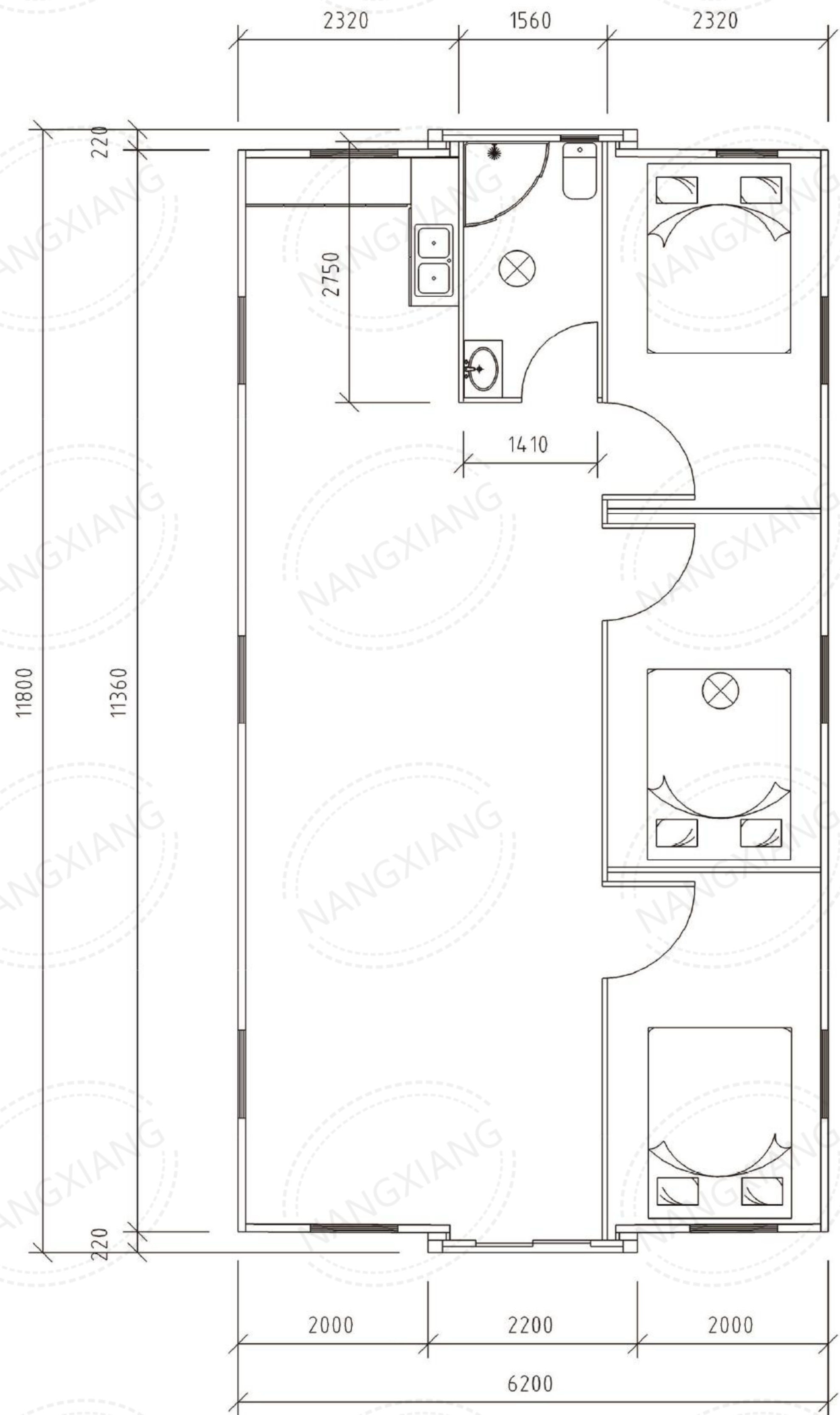
# Floor plans



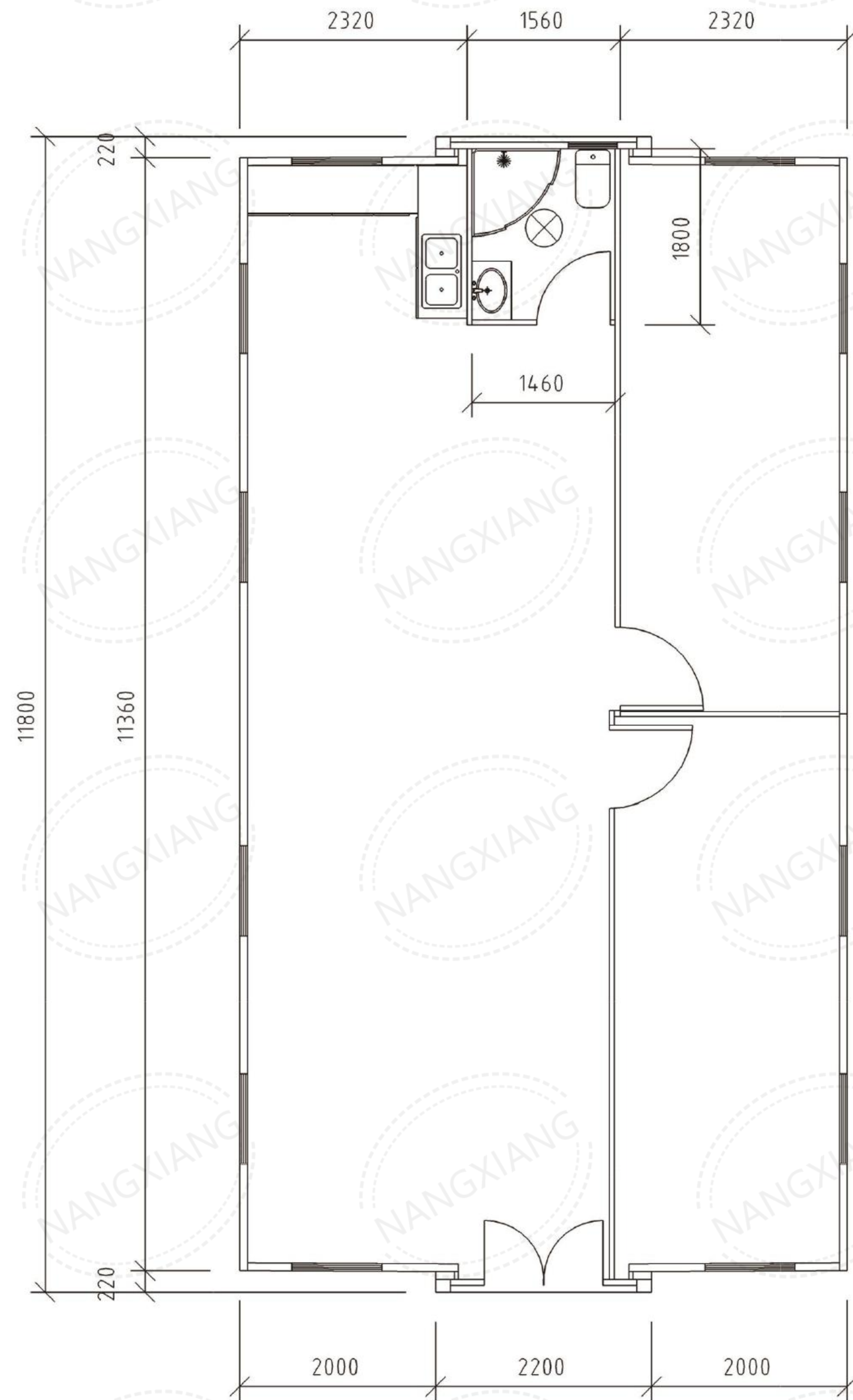
# Floor plans



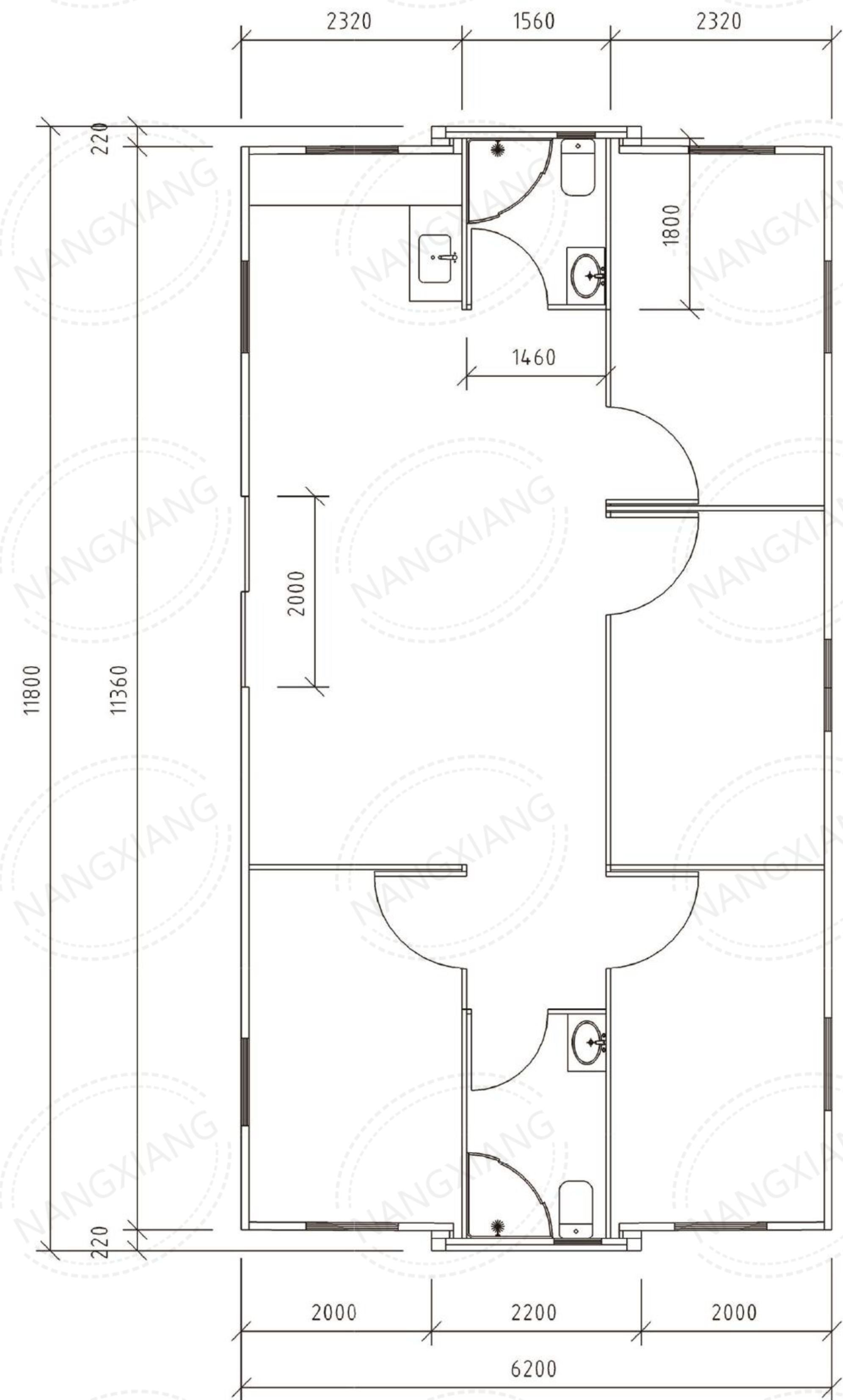
# Floor plans



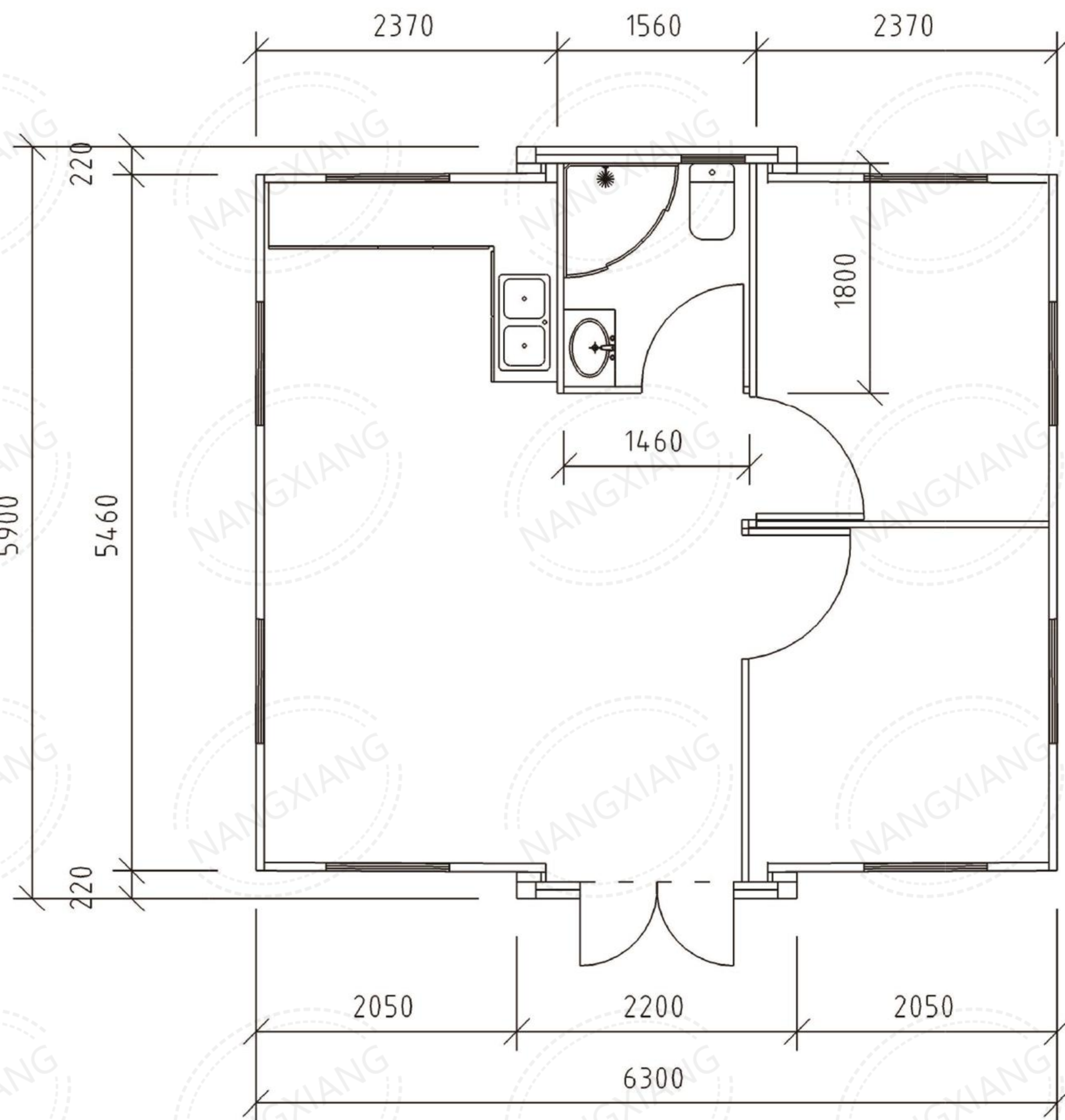
# Floor plans



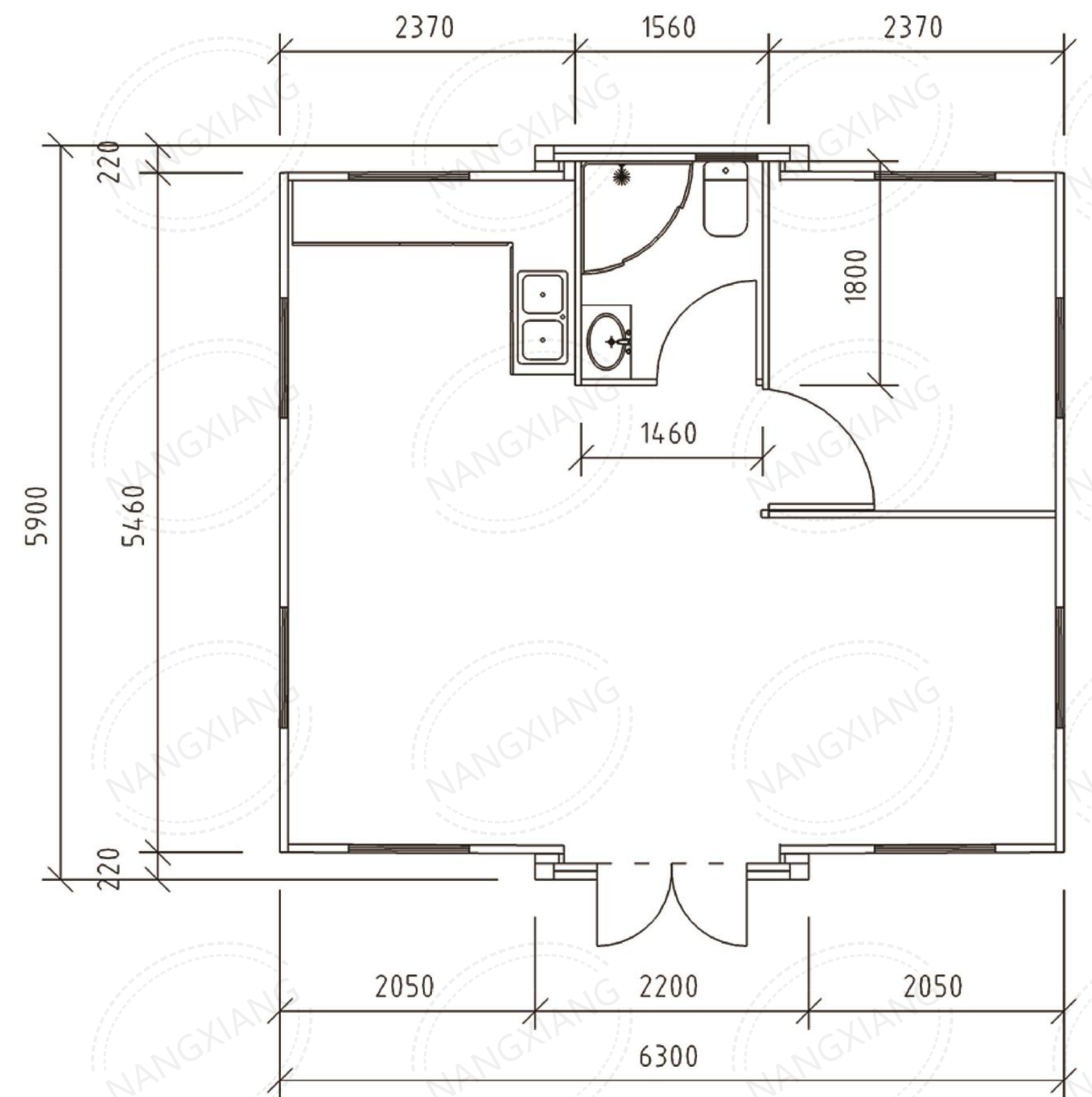
# Floor plans



# Floor plans



# Floor plans



# Transportation



# Floor style

